

Product Code	Product Range	Issue No.	Issue Date	Issue By
BX16S250	Distribution Board Range	D	March 2026	T. T.

Description

16 Way TP MCB distribution board with 250A TP switch disconnecter incomer. Max. MCB / RCBO – 63A.

Features

- High fault level.
- Modern design to latest standards.
- Industrial style board for more cabling space.
- Robust enclosure.
- Dual neutral and earth bars.

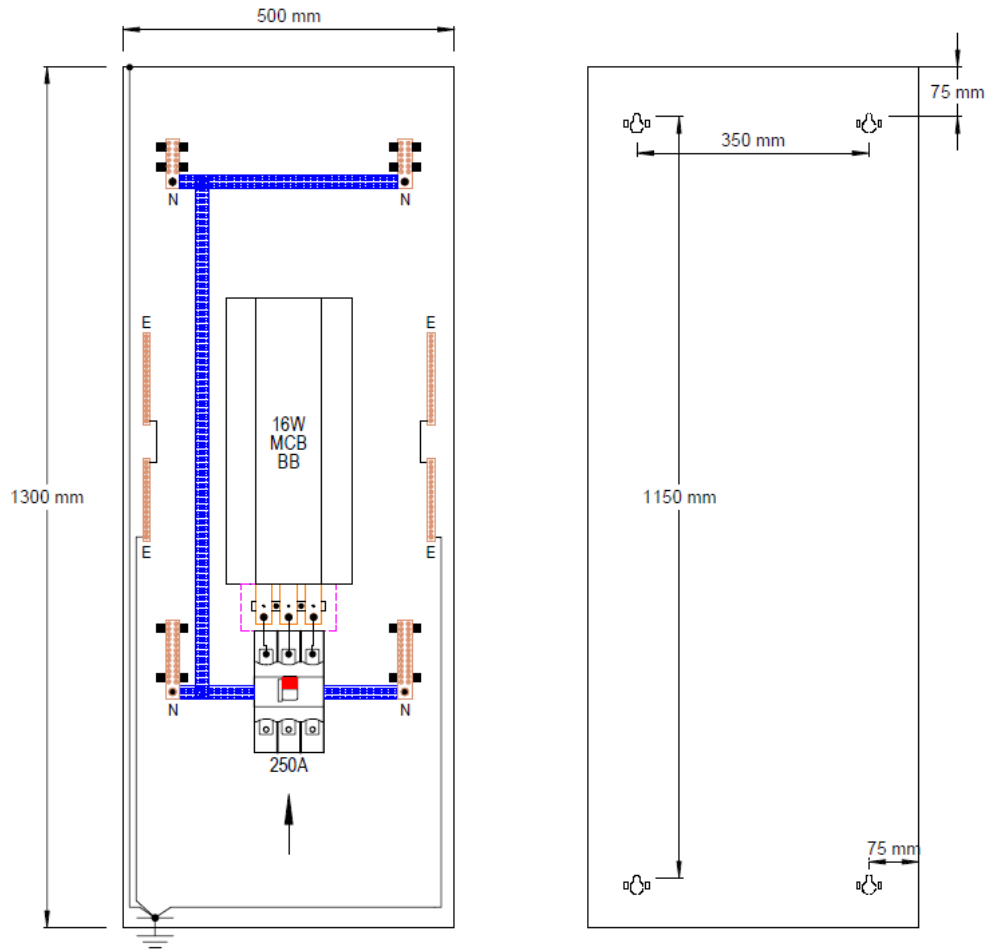


General Characteristics

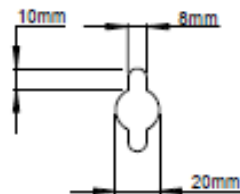
Standards	BS EN 61439-3. BS EN 61439-1.
Current Rating	250A
Voltage Rating	400V AC
Fault Current Rating	10kA
IP Rating	3X
Pollution Degree	3
No. of Poles	3 pole busbar. Neutral and earth terminal bars.
Incomer Terminal Capacity & torque	M8 bolt. 95mm.sq. maximum. 20Nm
Incoming Neutral & earth bolts & torque	M10 bolt. 30Nm
Rated Insulation Voltage (Ui)	690V
Rated frequency	50 / 60Hz
Equipment Type	Fixed
EMC environment	Type A.
Cable entry facility	Top & bottom endplates removable for ease of cutting.
Ambient operating temperature	-5 to 40 °C. Not exceeding average of 35 °C in any 24 hour period.
Maximum altitude	2000m
Approx weight (kg)	33.5



Dimensions



Fixing hole detail



Additional information

Usage:	Intended for use by ordinary persons.
With all covers fitted.	Intended for use by skilled persons or instructed persons.
Maintenance.	
Enclosure	Bolted mild steel enclosed assembly. Powder coated in Hard wearing epoxy matt light grey paint to RAL 7035. Door fitted with metal turn catch type latch.
Installation	Service conditions: Wiring of this product must comply with current IEE regulations. Units are intended for indoor use, dry conditions and NOT where high levels of humidity and temperature are experienced.