

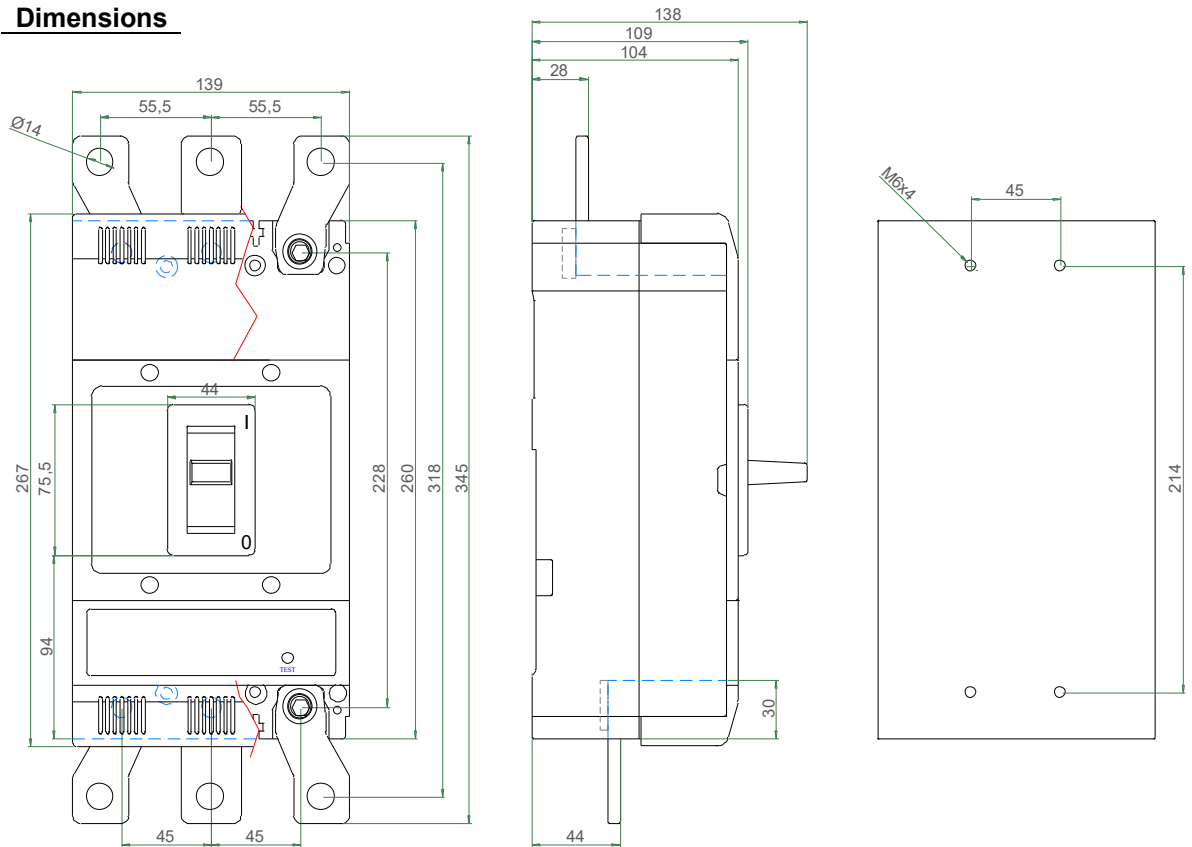
Product Code	Product Range	Issue No.	Issue Date	Issue By
MC400TNA	MC MCCB	B	11-05-2023	B.S.



General Characteristics

Standards	EN/IEC 60947-3
Current Rating (In) at 40°C	400A
No. of Poles	3P
Rated Operating Voltage (Ue) AC 50-60Hz	400V
Rated Insulation Voltage (Ui) AC 50-60Hz	750V
Rated Impulse Withstand Voltage (Ui) AC 50-60Hz	8kV
Rated Ultimate Short-Circuit Capacity (Icm)	36kA with upstream protection circuit breaker
Polarity	Bi-directional
Terminal Cable Capacity	M12
Terminal Tightening Torque	56Nm
Weight	5.7kg
Operating Ambient Temp.	-20°C to +60°C
Pollution Degree	III

Dimensions



Additional information

Usage	Intended for use by skilled persons or instructed persons.
Electrical	EMC environment: Environment type A.
Installation	Service conditions: Wiring of this product must comply with current IEE regulations. Units are intended for indoor use, dry conditions and NOT where high levels of humidity and temperature are experienced.