

# Product Data Sheet



Product Code: <b>MCEL315T</b>	Issue No. <b>B</b>	Issue Date: 10/12/2018	Issue by: T. Tombs
-------------------------------	-----------------------	---------------------------	-----------------------

## Description

315A 3P MCCB with bolted neutral link.  
Type A filtered earth leakage relay, voltage dependent, mounted in a mild steel enclosure.

## General Characteristics

Standards.	BS EN60947-1 & 2. IEC 60755, IEC 62020, IEC 61543.
Current rating.	315A
Voltage rating.	230 / 400V ac. 50/60Hz.
Fault current rating	36kA.
Enclosure. Dimensions	Mild steel to IP3X. 950mmH x 400mmW x 170mmD.
Finish	Matt grey to RAL 7035, Electrostatically applied.
IP Rating.	3X
No of poles.	3 switched, bolted neutral.
Terminal capacity.	Phases – M12 bolt. Neutral – M12 bolt.
Terminal tightening torque.	Mccb – 50Nm. Neutral – 50Nm.
Cable entry facility.	Plain plate top and bottom. Drill to suit on site.
Covers / Door.	Front bolt on cover.
Earth leakage relay settings. True RMS sensing. Adjustable.	Milli amp – 30, 100, 300, 500. Amps – 1, 3, 5, 10, 20, 30.  Time – mS 0, 60, 150, 250, 500, 800. Sec – 1, 2.5, 5, 10.
E/L CT diameter.	120mm internal diameter.
Equipment type.	Fixed stationary
Weight.	27.5 kg

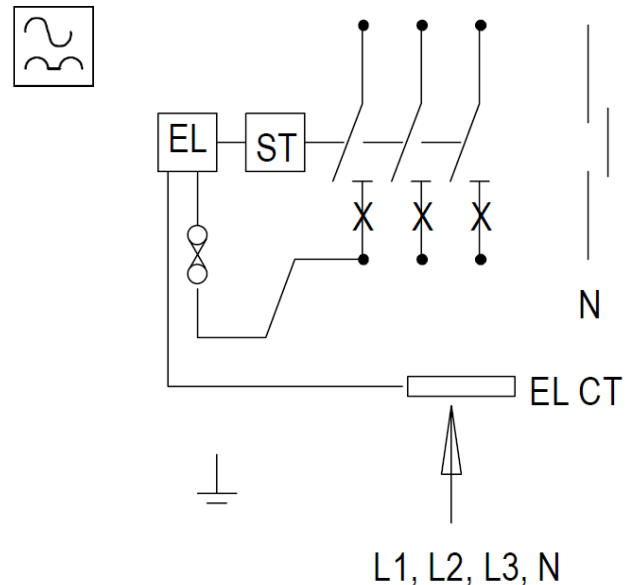


## Switchgear Fitted

Device	Rating
MC315T Earth Leakage relay and CT	315A

**MCCB:** For full technical details of the mccb request MCCB data sheet.

**Accessories.** Padlock device: Part no. **MCPD** (padlock not supplied).



Minimum sensitivity  $I_{\Delta n} - 0.1 A$   
It is intended that this device is under the supervision of an instructed or skilled person.  
BS7671:2018 clause 531.3.4.2

# Product Data Sheet

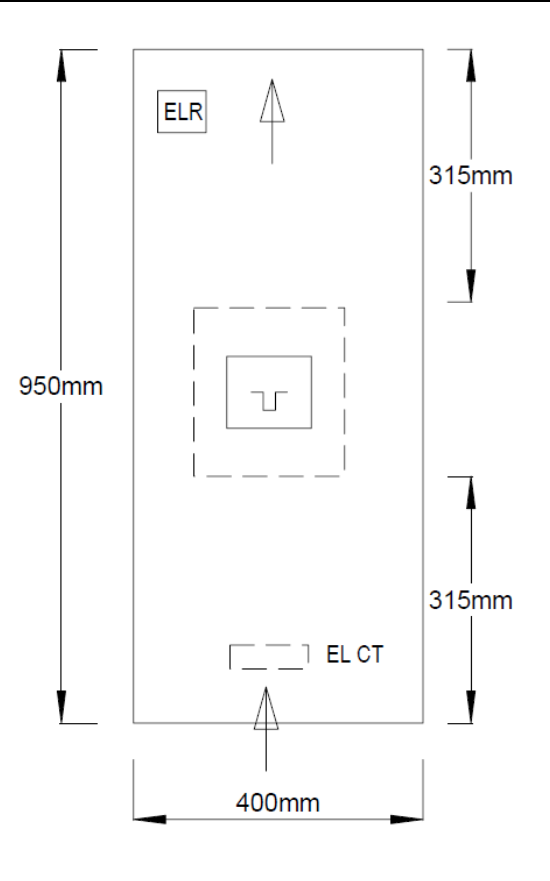


Product Code: <b>MCEL315T</b>	Issue No. <b>B</b>	Issue Date: 10/12/2018	Issue by: T. Tombs
-------------------------------	-----------------------	---------------------------	-----------------------

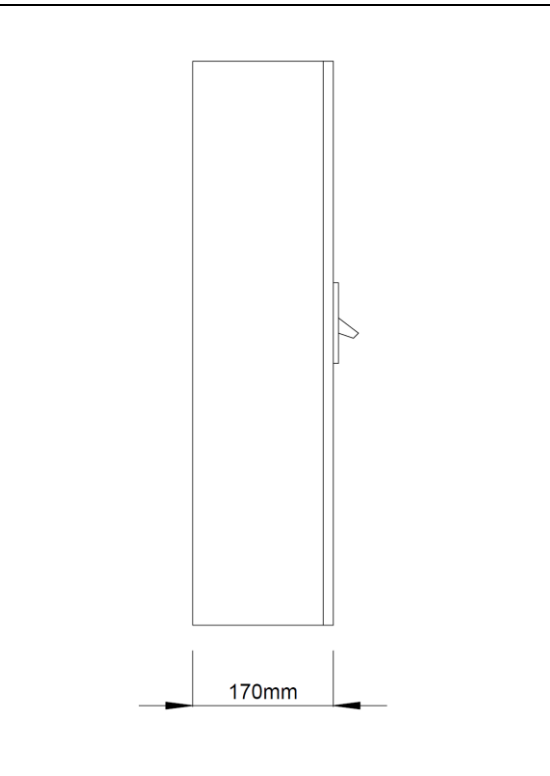
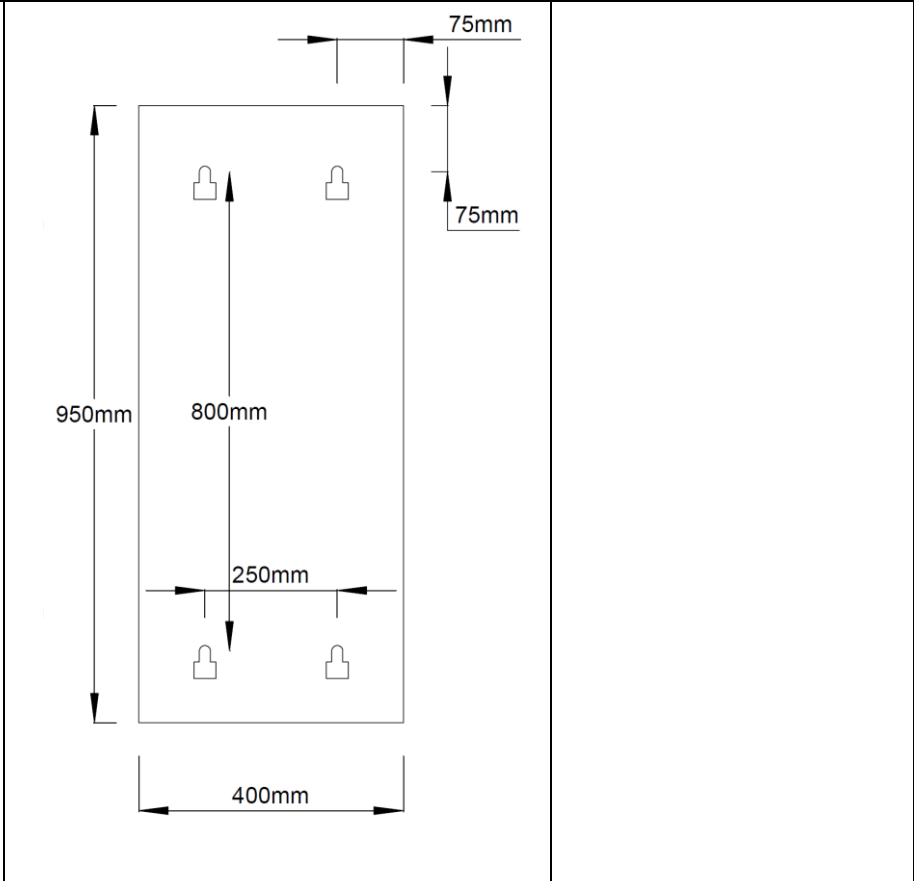
## Description

250A 3P MCCB with bolted neutral link.  
Type A filtered earth leakage relay, voltage dependent, mounted in a mild steel enclosure.

## Key Dimensions



## Mounting hole positions



**Additional information.**

**Usage**  
Intended for use by skilled persons or instructed persons.

**Electrical**  
Earth terminal : Earth bolt M10.  
Rated frequency: 50Hz.  
Rated operational voltage: 400V  
Rated insulation voltage: 750V.  
Earthing system:  
EMC environment: Environment type A.

**Physical**  
Ambient operating temperature -5 to 40 °C  
(Not exceeding average of 35 °C in any 24 hour period).  
Maximum altitude 2000m.

**Earth Leakage relay**  
Power on LED.  
Earth leakage indication displayed in LED array (% leakage of setting).

**Installation**  
Service conditions: Wiring of this product must comply with current IEE regulations. Units are intended for indoor use and dry conditions and **NOT** where high levels of humidity and temperature are experienced.  
Note: IP rating of enclosures can be compromised if correct use of glands is not followed when installing unit.