



## HAMPTONS SE8002 - 6 X 0.6W

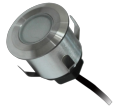
IP65 LED residential deck light kits

### Application

Decorative exterior feature lighting

### Design Specifications

- Durable 316 stainless steel face and aluminium body
- Frosted polycarbonate diffuser Ø35 mm x H26 mm round deck lights
- 6 x 0.6W deck light head with 3.5 m PVC flex & 2 pin quick connect plug
- Pre-wired 6m of rubber flex with 6 x 2 pin quick connect sockets
- 1 x IP65 10VA driver, non-dimmable
- SE8002P extension kit contents include: 1 x Ø35 x H26 mm, 316 stainless steel face round deck light, 1 x 3.5 m PVC flex with 2 pin quick connect plug, 1 x 1.1 m extension cable, maximum of 10 connected heads per (kit) driver, IP65, IK08 performance







### Performance

- Dimmable - **NO**





## Technical Specification

Product	Model No.	Input Voltage (V/AC)	Output Voltage (V/DC)	Power (W)	CCT (K)	CRI
	SE8002WW	240	12	3.6	3000	80
	SE8002P/WW	240	12	0.6	3000	80
	SE8002NDL	240	12	3.6	5000	80
	SE8002P/NDL	240	12	0.6	5000	80

Mass (kg)	Diameter (mm)	Dim (mm)	Body Colour
1.41	35	35(W) x 26(H)	STAINLESS STEEL
0.2	35	35(W) x 26(H)	STAINLESS STEEL
1.41	35	35(W) x 26(H)	STAINLESS STEEL
0.2	35	35(W) x 26(H)	STAINLESS STEEL

\* Power shown is TOTAL luminaire power (W).

Due to continued product and technology enhancements, data sourced from sal.net.au shall not form part of any contract and or technical performance guarantee unless expressly confirmed in writing by SAL at the time of order. Products are sold in accordance with [SAL Terms and Conditions of sale](#) and all images shown are for illustration purposes only and may vary from the actual colour or finish. Unless specifically stated, all IP ratings nominated for Interior products are from "below the ceiling".

## Dimensions

