



## STRIP CHANNEL - SLT3000

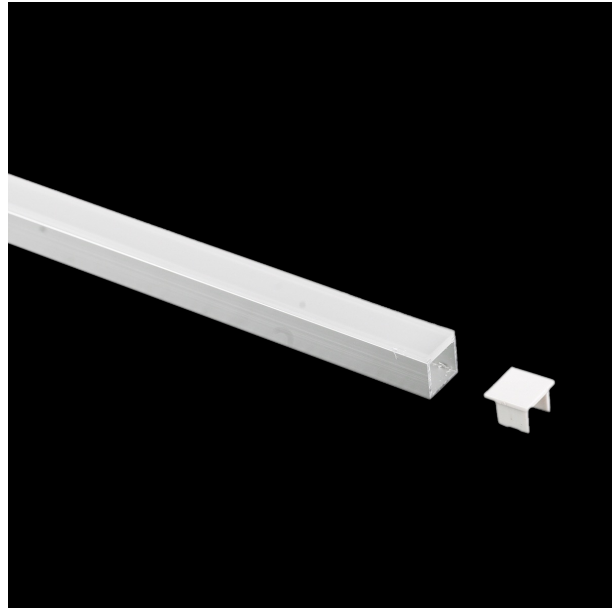
Surface or recessed mount channel profile and accessories

### Application

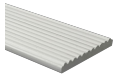
A creative solution for residential and commercial interior spaces

### Design Specifications

- Extruded aluminium body, strip width 12mm
- Extruded aluminium body, anodized silver finish
- Opal diffuser for SLT3000/2/3
- Channel length 1000, or 2000mm
- SLT3000 supplied with end caps only
- Optional 10m bulk roll of flexible silicon diffuser - SLT3000DF



SLT3000-P



### Technical Specification

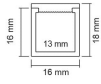
Product	Model No.	Dim (mm)
	SLT3000	1000(L) x 16(W)
	SLT3000/2M	2000(L) x 16(W)
	SLT3000/P	1000(L) x 16(W)
	SLT3000/P/2M	2000(L) x 16(W)

Due to continued product and technology enhancements, data sourced from sal.net.au shall not form part of any contract and or technical performance guarantee unless expressly confirmed in writing by SAL at the time of order. Products are sold in accordance with [SAL Terms and Conditions of sale](#) and all images shown are for illustration purposes only and may vary from the actual colour or finish. Unless specifically stated, all IP ratings nominated for Interior products are from "below the ceiling".

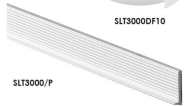
## Dimensions



SLT3000



SLT3000DF10



SLT3000/P

