

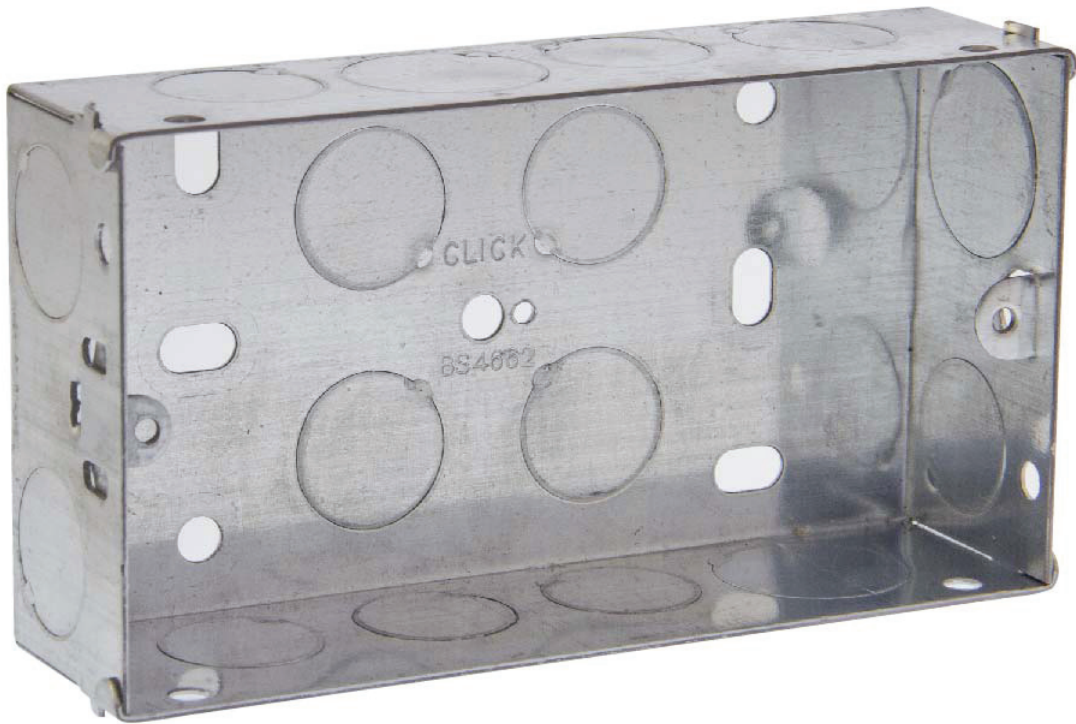
SPECIFICATION SHEET

Product Code

WA096

Description

2 Gang 35mm Deep Galvanised Steel Knock Out Box



General Information	
Dimensions	135mm x 70mm x 35mm
Material Composition	Galvanised Mild Steel Body Brass Earth Terminals
Steel Thickness	1mm
Back Box Depth	35mm
Knockout Size	20mm knockouts, 4 on the back, 2 on one side, 1 on the other side, 3 on the bottom & 3 on the top. 25mm Knockouts, 1 on one side, one on both top and bottom.
Warranty	10 Years
Standards	
	BS 4662