

# Switch & Socket Boxes

The Tamlex range of switch & socket boxes are available in a wide range of styles and sizes for any domestic, commercial and industrial installations



## Key features

- Switch & socket boxes conform to BS4662.
- Boxes supplied with one fixed lug & one adjustable lug.
- Manufactured from continuously hot dipped zinc coated low carbon steel strip to BSEN10346: 2009.
- Switch and socket boxes are fitted with brass pillar earth terminals.

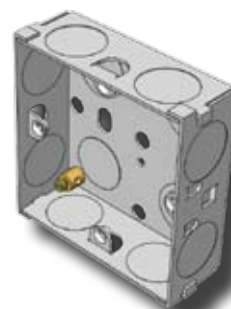
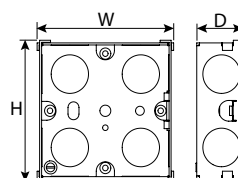
*Did you know*

Tamlex can produce special box sizes to suit any application.

## 1 Gang Switch & Socket Boxes

| Size (mm) |    |    | Cat. No.     |
|-----------|----|----|--------------|
| H         | W  | D  |              |
| 72        | 72 | 16 | <b>T1G16</b> |
| 72        | 72 | 25 | <b>T1G25</b> |
| 72        | 72 | 35 | <b>T1G35</b> |
| 72        | 72 | 47 | <b>T1G47</b> |

T1G16 has 1 fixed lug and one adjustable lug.  
All other boxes have dual fixed lugs.

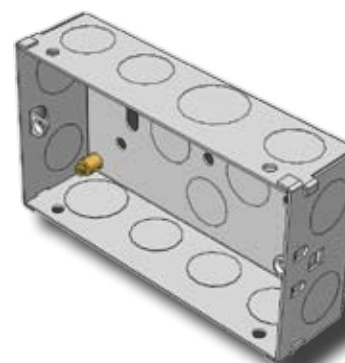
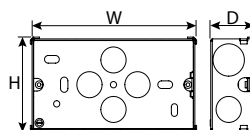


T1G25

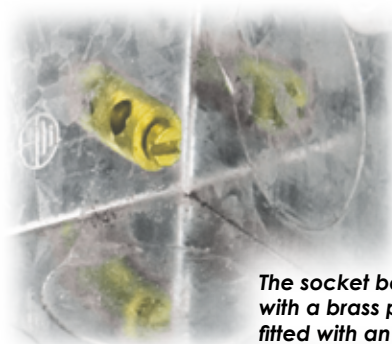
## 2 Gang Switch & Socket Boxes

| Size (mm) |    |    | Cat. No.         |
|-----------|----|----|------------------|
| H         | W  | D  |                  |
| 132       | 72 | 25 | <b>T2G25</b>     |
| 132       | 72 | 35 | <b>T2G35</b>     |
| 132       | 72 | 47 | <b>T2G47</b>     |
| 156       | 72 | 35 | <b>T2G35DUAL</b> |

All boxes have 1 fixed lug and one adjustable lug.  
T2G35DUAL has 2 x single socket apertures and dual fixed lugs.



T2G35



The socket boxes are supplied with a brass pillar earth terminal fitted with an M4 screw