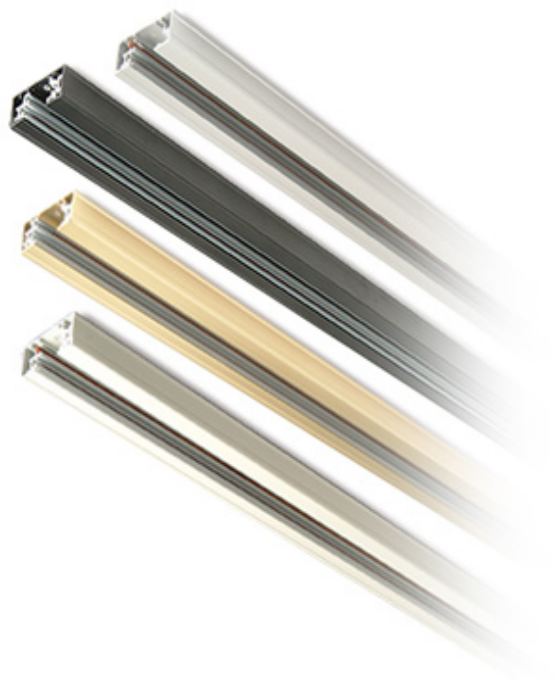


SOLO TRACK

Mains Single circuit track system



Features:

The Tamlite 'Solo' single circuit system has an unobtrusive profile and includes a wide range of accessories for a variety of configurations
Luminaires can be positioned at any point along a track length and secured with a simple twist and lock action
Sections are supplied complete with two stop ends
Available in 4 colour finishes

Construction:

Extruded aluminium body
Each section supplied with dead-ends

Options:

Note: Colour must be specified when ordering.

SOLO TRACK

Mains Single circuit track system

Order Codes

All dimensions are in millimetres

Order Code	Version	Weight(Kg)
T600	600mm track	0.34
T1200	1200mm track	0.64
T1800	1800mm track	0.94
T2400	2400mm track - Black & White only	1.30

Dimensions

All dimensions are in millimetres

Order Code	A	B	C
T600	615	18	35
T1200	1205	18	35
T1800	1835	18	35
T2400	2445	18	35

Installation Instructions:

Surface fix via centre fixing hole

Notes:

Add suffix to order code when choosing colour

Please Note: Order codes listed are for standard (non-emergency) versions only. For all other gear options, please contact TamLite Lighting.



Tamlite Display.
T: 01527 528 556
F: 01527 526 671
E: starlite@tamlite.co.uk

Tamlite Technical.
T: 01952 292 441
F: 01952 292 155
E: technical@tamlite.co.uk

