



EAN:	4013288222879	Size:	150x130x50 mm
Part number:	05023471001	Weight:	567 g
Article number:	Kraftform Kompakt 400 RA Set 1	Country of origin:	CZ
		Customs tariff number:	82079030

- The integrated ratchet with fine tooththing ensures fast and safe working
- Convenient working thanks to the ratchet mechanism fully embedded in the handle
- Reversing lever for comfortable clockwise/counterclockwise direction change
- Ergonomic 2-component handle with finger handle recesses and pleasant surface feel for very high power transmission and fatigue-free working
- Rapidaptor bitholding screwdriver with fast-rotating sleeve for lightning-fast bit changes and high working speeds
- For bits with 1/4" external hexagon drive as per DIN ISO 1173-C 6.3 and E 6.3
- Fast-rotating sleeve for extremely high working speed

17-piece set in a robust textile box. One 416 RA T-handle bitholding screwdriver with ratchet function and Rapidaptor quick-release chuck for 1/4" bits. The integrated ratchet with fine tooththing (80 teeth/return angle 4.5°) eases and accelerates screwdriving without having to reposition the tool. The ratchet mechanism completely embedded in the handle ensures very handy and comfortable work. With reversing lever for comfortable clockwise/counterclockwise direction change in one-hand operation. The ergonomic shape of the handle fills the ball of the hand well, the fingers lie securely in the softly rounded recessed grips. The whole hand comes into contact with the handle, friction loss between hand and handle is avoided. Bit holder for bits with 1/4" external hexagon drive as per DIN ISO 1173-C 6.3 and E 6.3. With Rapidaptor technology for lightning-fast bit changes. 16 tough bits, 1/4", 89 mm long, for universal use.

Web link

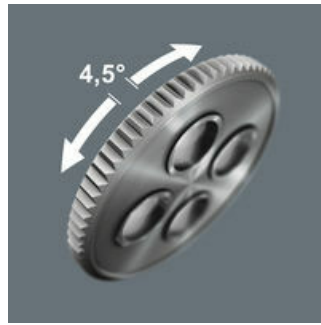
Wera - Kraftform Kompakt 400 RA Set 1
05023471001 - 4013288222879

Wera Werkzeuge GmbH
Korzter Straße 21-25
D-42349 Wuppertal
Tel: +49 (0)2 02 / 40 45-0
E-Mail: info@wera.de

Ratchet function

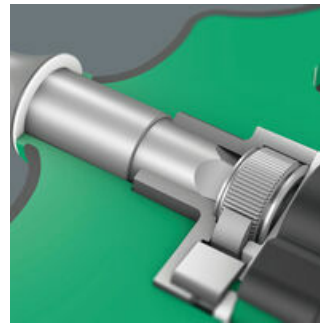


The ratchet mechanism of the 416 RA T-handle bitholding screwdriver is completely embedded in the handle. The compact shape of the tool allows convenient working.



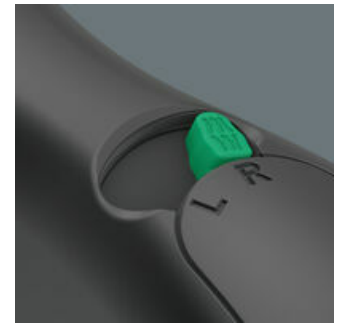
The integrated ratchet with fine toothing (80 teeth) and a return angle of 4.5° eases and accelerates screwdriving without having to reposition the tool.

Ratchet mechanism in the handle



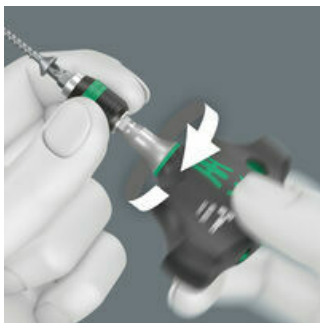
The ratchet mechanism of the 416 RA T-handle bitholding screwdriver is completely embedded in the handle. The compact shape of the tool allows convenient working.

Reversible clockwise/counterclockwise



The change of direction can easily be made using the reversing lever.

Fast-rotating sleeve



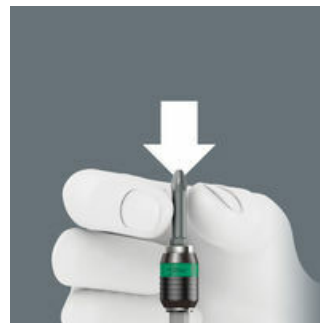
The fast-rotating sleeve allows the tool to be guided safely while screwdriving and increases the working speed.

Ergonomic 2-component T-handle



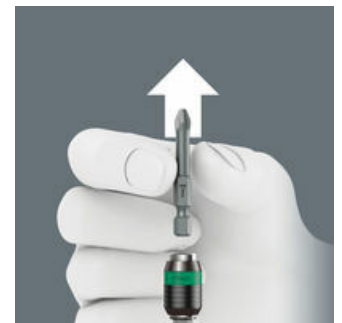
The ergonomically shaped 2-component T-handle with finger recesses and pleasant surface facilitates very high power transmission and fatigue-free working.

Rapid-in and self-lock



The bit can be pushed into the adaptor without moving the sleeve. The lock is activated automatically as soon as the bit is applied to the screw. Bits are held securely and wobble-free.

Rapid-out



Simply push the sleeve forward to change the bit. The spring mechanism lifts the bit off the magnet and unlocks the tool. The bit can be easily removed. The rapid-out function makes it easy to remove even the smallest bits without extra tools.

Web link

Wera - Kraftform Kompakt 400 RA Set 1
05023471001 - 4013288222879

Wera Werkzeuge GmbH
Korzter Straße 21-25
D-42349 Wuppertal
Tel: +49 (0)2 02 / 40 45-0
E-Mail: info@wera.de

Set contents:

416 RA T-handle bitholding screwdriver with ratchet function and Rapidaptor quick-release chuck, 1/4 x 45 mm



1x 1/4 x 45 mm



851/4 Z bits, PH 2 x 89 mm



05059775001

1x PH 2 x 89 mm

05059795001

1x PH 3 x 89 mm



855/4 Z bits, PZ 2 x 89 mm



05060035001

1x PZ 2 x 89 mm

05060043001

1x PZ 3 x 89 mm



867/4 Z TORX® bits, TX 10 x 89 mm



05060186001

1x TX 10 x 89 mm

05060187001

1x TX 15 x 89 mm

05060188001

1x TX 20 x 89 mm

05060189001

1x TX 25 x 89 mm

05060191001

1x TX 30 x 89 mm

05060192001

1x TX 40 x 89 mm



840/4 Z bits, 3 x 89 mm



05059630001

1x 3 x 89 mm

05059631001

1x 4 x 89 mm

05059632001

1x 5 x 89 mm

05059633001

1x 6 x 89 mm

05059637001

1x 8 x 89 mm



800/4 Z bits, 1 x 5.5 x 89 mm



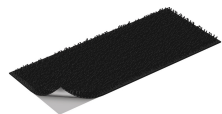
05059488001

1x 1 x 5.5 x 89 mm



Hook and Loop Fastener Strip 120, 120 x 50 mm

1x 120 x 50 mm



Web link