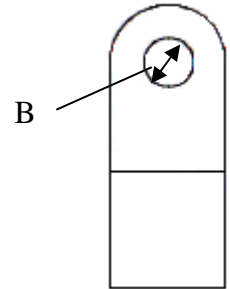
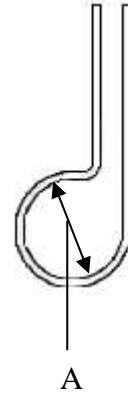


SINGLE CLIPS & TWO WAY SADDLES (BARE COPPER)

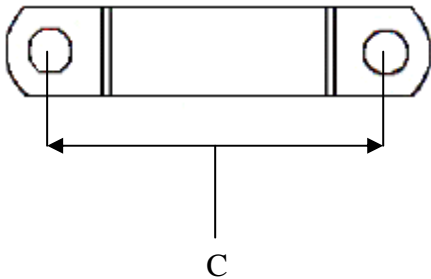
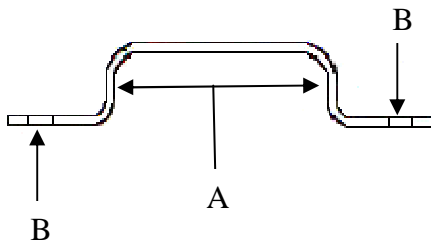
Bare single Clips

P Clip Reference RC	Approximate Diameters mm (Reference A)	Hole Size mm (Reference B)	Wood Screw Number
20	5.1 - 5.4	4	6
22	5.7 - 6.0	4	6
24	6.4 - 6.7	4	6
26	6.6 - 6.9	4	6
28	7.3 - 7.6	4	6
30	7.7 - 8.0	5.25	8
32	8.1 - 8.4	5.25	8
34	8.7 - 9.0	5.25	8
37	9.4 - 9.9	5.25	8
40	10.3 - 10.8	5.25	8
43	10.9 - 11.3	5.5	10
47	12.4 - 12.8	5.5	10
51	13.1 - 13.4	5.5	10
54	13.6 - 14.8	5.5	10
59	15.2 - 15.6	5.5	10
63	16.4 - 16.8	5.5	10
67	16.9 - 17.3	7.1	14
71	18.1 - 18.6	7.1	14
75	19.2 - 19.6	7.1	14
79	20.0 - 21.4	7.1	14
88	22.9 - 22.5	7.1	14
101	25.8 - 26.2	7	14



Saddle Reference RS	Approximate Diameters of cables mm (Reference A)	Hole Size mm (Reference B)	Fixing Centre mm (Reference C)	Wood Screw Number
202	2 x 5.0 - 5.4	4.0	27.0	6
222	2 x 5.5 - 5.9	4.0	27.0	6
242	2 x 6.0 - 6.5	4.0	27.0	6
272	2 x 6.8 - 7.2	4.0	27.0	6
302	2 x 7.6 - 8.0	4.0	27.0	6
342	2 x 8.6 - 9.0	5.25	36.0	8
382	2 x 9.6 - 10.1	5.25	36.0	8
422	2 x 10.6 - 11.1	5.25	36.0	8
462	2 x 11.6 - 12.1	5.5	49.0	10
502	2 x 12.4 - 13.3	5.5	49.0	10
542	2 x 13.4 - 14.3	5.5	49.0	10
592	2 x 14.4 - 15.3	5.5	49.0	10
632	2 x 15.4 - 17.2	5.5	49.0	10
702	2 x 17.3 - 18.2	7.1	62.0	14
752	2 x 18.3 - 20.1	7.1	62.0	14
812	2 x 20.2 - 21.0	7.1	62.0	14

Bare two way saddles



The Wrexham mineral bare clips & Saddles

Material

Manufactured from drawn copper strip to BS1432 C101 9.52mm X 0.6mm HV 90 – 110